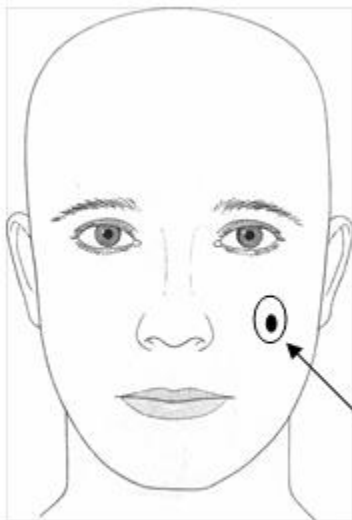


Thank you for choosing Cary Skin Center for your Mohs surgery. It is very important that the biopsy site be identified and photographed prior to surgery in the event that it heals on the surface making it difficult for us to locate. We ask that you take these photos as close to the biopsy date as possible to ensure visibility.

Following are some helpful instructions when taking photos for your upcoming appointment:

**\*\* PLEASE EMAIL PHOTOS AT LEAST 2 BUSINESS DAYS PRIOR TO YOUR SCHEDULED APPOINTMENT \*\***

- 1. Mark the biopsy site by circling it with a washable pen, make-up pen or use computer graphics.**
- 2. Take 2 photos: one up-close and one from a distance to identify the location of the lesion.**



Example of an ideal distance location photo.

Please  
circle or  
point to the  
biopsy site  
location.



Example of an up-close location photo.

- 3. Email photo to: [photo@caryskincenter.com](mailto:photo@caryskincenter.com) DO NOT REPLY TO THIS EMAIL.**
- 4. INCLUDE YOUR INITIALS AND DATE OF BIRTH AND/OR INITIALS & APPOINTMENT DATE IN THE BODY OF THE EMAIL.** A reply will be sent once the photos are received.

If you are unable to take a photo, please call our office as soon as possible at (919) 363-7546 in Cary or (910) 295-1761 in Pinehurst to schedule a no-charge photo appointment with a member of our clinical team.